

CA 2001 Resistance thermometer

Protection tube

| | |
|---------------------------|--|
| Construction | Closed-end tube, max. 60bar and mediavelocity of max. 25m/sec (air) or 3m/sec (water), depending of length |
| Diameter | 9.0mm standard, other diameters possible |
| Material | SS 316 - (Wst 1.4401) standard, other materials possible |
| Insertion length | Customer to specify |
| Process connection | M20x1.5, 1/2"BSP (G1/2"), 1/2"NPT or other threads possible |

Connection head

| | |
|--------------------|--|
| Material | Aluminium, plastic or stainless steel |
| Cable entry | M20x1.5 cable gland standard, other threads possible |

Measuring insert

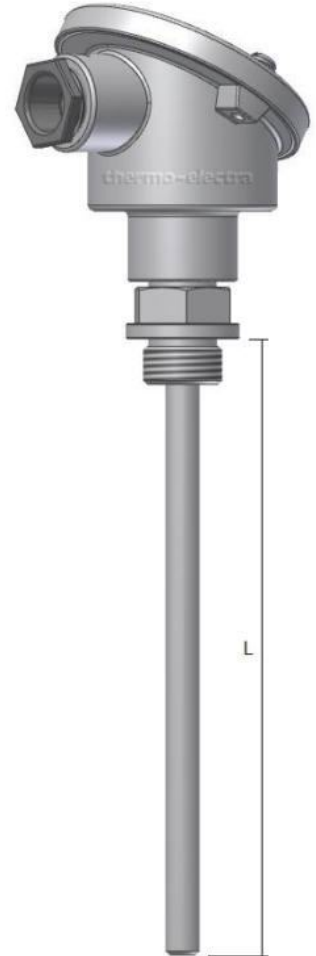
| | |
|---------------------|--|
| Type | MI 2025 |
| Construction | Springloaded and replaceable |
| Diameter | 6.0mm standard, other diameters possible |
| Length | E = L+45 mm |
| Material | SS 316 - (Wst 1.4401) standard, other materials possible |

Sensor

| | |
|---------------------------|--|
| | Single or Duplex Pt100 |
| Accuracy | According IEC 60751 Cl. B, A or AA |
| Style / Connection | 3-wire system standard, 4-wire system optional |
| Range | -20 / +400°C standard, -220 / +600°C optional |

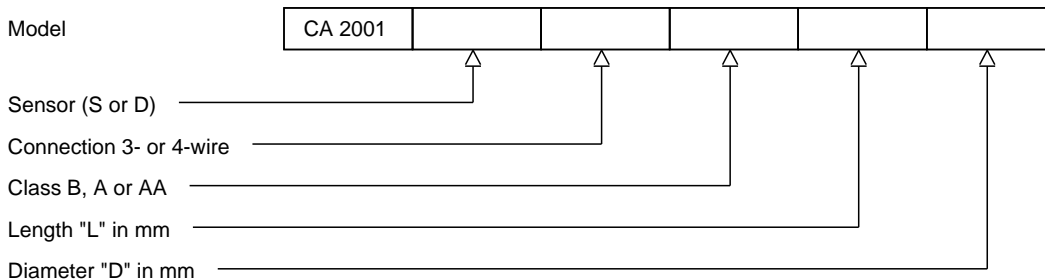
Options

| | |
|------------------------------|---|
| Transmitter 4-20mA | In-Head Transmitter, standard or Ex version. Please select from our standard range or specify your own standard |
| Swing-Cover head | DAN, transmitter direct mounted on measuring insert |
| High Swing-Cover head | DAN-H, transmitter in cover, insert with ceramic block |



Ordering code

*This datasheet is purely indicative, build-up of model code may vary from this datasheet.



H2-1 Rev.0 7/07