

LEX15 Ex e certified thermocouple with cable for zone 1 and 2

Construction

ATEX execution	II 2 G Ex eb IIC T6...T1 Gb
ATEX certificate	DEKRA 17ATEX0123 X
IECEX execution	Ex eb IIC T6...T1 Gb
IECEX certificate	IECEX DEK 17.0046X
Suitable for zone	1 and 2
Ingress protection	IP65 / IEC529
Ambient temp. range	-45°C...+80°C, this can be limited depending on the materials applied such as cable, connection head or junction box.

Sheath

Construction	Mineral insulated (MgO)
Material	SS316 standard, other materials possible
Diameter	Customer to specify (0.25-12.7mm)
Length	Customer to specify

Hot junction

Isolated

Sealpot

Length	45 mm
Diameter	To suit cable diameter

Lead wire

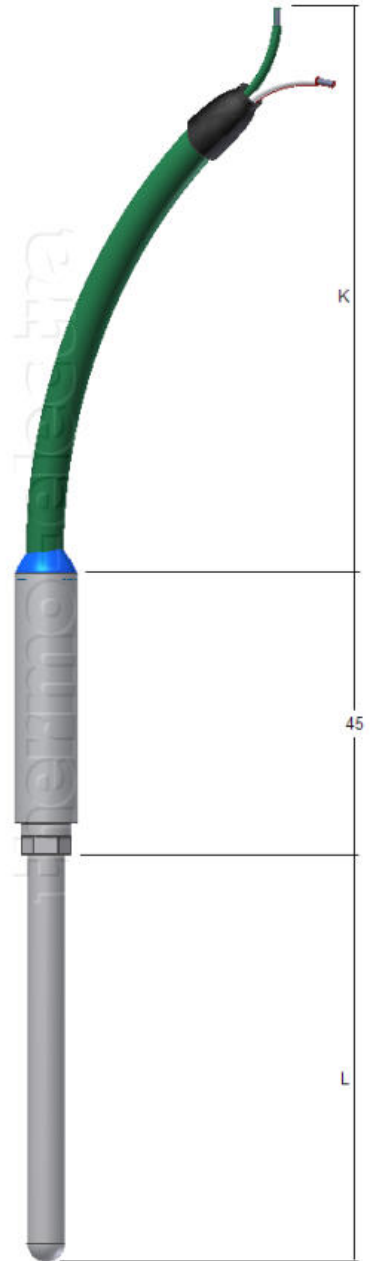
Type of cable	PVC standard
Option	PUR, Silicon or PTFE insulated cable
Cable length	Customer to specify

Thermocouple

Calibration	K, T, J, E, N, R, S, B, U or L
For duplex	KK, TT, JJ, EE, NN, RR, SS, BB, UU or LL
Accuracy	According to IEC 60584-1

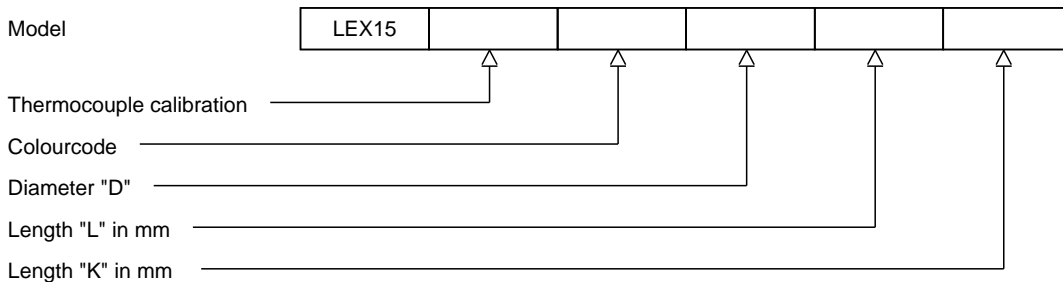
Datasheet notification

This datasheet is purely indicative, build-up of model code may vary from this datasheet depending on chosen model or execution!



Ordering code

*This datasheet is purely indicative, build-up of model code may vary from this datasheet.



H3-1 Rev.0 7/07