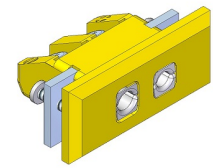


# TE1031 Standard panel jack with bracket



## Application

<b>Female panel connector</b>	Thermocouple and RTD circuits
<b>Contacts</b>	Springloaded thermocouple contacts
<b>Materials</b>	Glass filled thermoplastic body with original thermocouple material contacts

## Temperature rating

<b>Temperature limit</b>	Maximum 220°C
--------------------------	---------------

## Construction

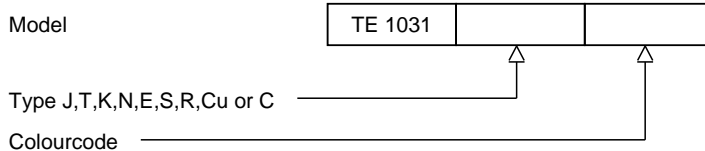
<b>Body</b>	Glass filled thermoplastic material
<b>Design</b>	Stainless steel bracket mounted with 2 screws
<b>Molded barriers</b>	Prevent short circuit

## Wire size

<b>Accepts wires</b>	From 0,2mm to 2.0mm
----------------------	---------------------

## Ordering code

\*This datasheet is purely indicative, build-up of model code may vary from this datasheet.



H9-2Rev.0 7/07