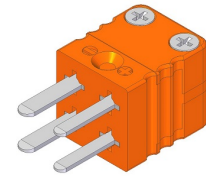


TE1260D Mini plug dual circuit



Applications

Connector Mini Connector for thermocouple and RTD circuits. Suited for small wires and mineral insulated cable. Can be used for 4-wire RTD's.

Construction

Temperature limit Maximum 220°C

Design Rugged one body design

Body material Glass filled high quality thermoplastic body with original thermocouple material pins and springloaded inserts.

Pins Polarized pins ensure proper connection

Molded barriers Prevent short circuit

Termination Stainless Steel screws with Phillips head

Wire size

Accepts wires up to 0.6mm

Maximum cable diameter 4.5mm

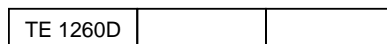
Colourcode

Available in all colour code standards incl. NFE, BS, JIS, etc

Ordering code

*This datasheet is purely indicative, build-up of model code may vary from this datasheet.

Model



Thermocouple type J,T,K,N,E,S,R,Cu or C

Colourcode